



NEWS *Lines*

PUBLISHED MONTHLY FOR THE MEMBER-OWNERS OF NORTH WEST RURAL ELECTRIC COOPERATIVE

FEBRUARY 2022

IN THIS *Issue*

4 Tips for Winter Safety
2

Cooperatives Outage
Resource Available
2

Youth Tour Contest
3

Manager's Report
4-5

Operation
Round-Up Report
6

Powerline Scholarship
6

Scholarship
Application
7

Power Quiz
8

Are you
Switch Smart?
8

SCHOLARSHIPS *Available*



North West REC and Basin Electric Power Cooperative will be sponsoring several scholarships to dependents of members of North West REC in 2022. Last year we awarded \$35,000 in scholarships to 85 students!

There will be two \$1,000 scholarship winners from each of the four districts of North West REC (Ida, O'Brien, Plymouth, and Sioux). The selection process for the \$1,000 scholarship winners will be based on a combination of SAT/ACT scores, overall grade-point average, work experience, participation in school and community activities, a personal statement of career goals, and a written reference or appraisal by a third party.

Scholarship applicants, who are not awarded a \$1,000 scholarship award, will be asked to watch an educational video on North West REC and the cooperative model and then complete a questionnaire. This will then enter applicants into a random drawing for a \$500 or \$250 scholarship. All applicants will receive at least a \$250 scholarship. Details of this video and questionnaire will be communicated at a later date.

North West REC members may qualify if their dependent meets the following criteria:

- Must be a U.S. citizen.
- Are current North West REC members.
- Must be a senior in high school in our service territory for the 2021-2022 school year and planning to enroll in a full-time undergraduate or graduate course of study at an accredited two-year or four-year college, university, or vocational/technical school.
- Submit an application as provided by North West REC.
- Return all completed forms no later than Friday, February 25, 2022.

You can apply online by visiting our website at www.nwrec.coop or you can e-mail Renee at rwynia@nwrec.coop and she will send you an application. If you have any questions, please call 712-707-4935 or 1-800-766-2099. All entries for the scholarship must be returned to the REC no later than Friday, February 25!

Annual Meeting

SAVE! the DATE!

Thursday, March 31, 2022, at 6:30pm
More information in the Manager's Report on pages 4-5 in this newsletter.

4 TIPS FOR *Winter Safety*

It's no surprise that winter months bring increased potential for fire risks and electrical safety hazards. This makes sense because during the coldest months, consumers are using additional electrical devices and appliances, like space heaters, electric blankets and portable generators.

The National Fire Protection Association estimates that 47,700 home fires occur each year in the U.S. due to electrical failure or malfunction. These fires result in 418 deaths, 1,570 injuries and \$1.4 billion in property damage annually. This winter, safeguard your loved ones and your home with these electrical safety tips.

1. Use portable generators safely.

Winter storms can cause prolonged power outages, which means many consumers will use portable generators to power their homes. Never connect a standby generator



into your home's electrical system. For portable generators, plug appliances directly into the outlet provided on the generator. Start the generator first, before you plug in appliances. Run it in a well-ventilated area outside your home. The carbon monoxide it generates is deadly, so keep it away from your garage, doors, windows and vents.

2. Never leave space heaters unattended. If you're using a space heater, turn it off before leaving the room. Make sure heaters are placed at least three feet away from flammable items. It should also be noted that space heaters take a toll on your energy bills. If you're using them throughout your home, it may be time to upgrade your home heating system.

3. Inspect heating pads and electric blankets. These items cause nearly 500 fires every year. Electric blankets that are more than 10 years old create additional risks for a fire hazard. Inspect your electric blankets and heating pads – look for dark, charred or frayed spots, and make sure the electrical cord is not damaged. Do not place any items on top of a heating pad or electric blanket, and never fold them when in use.

4. Don't overload outlets. Overloaded outlets are a major cause of residential fires. Avoid using extension cords or multi-outlet converters for appliance connections—they should be plugged directly into a wall outlet. If you're relying heavily on extension cords in general, you may need additional outlets to address your needs. Contact a qualified electrician to inspect your home and add new outlets.

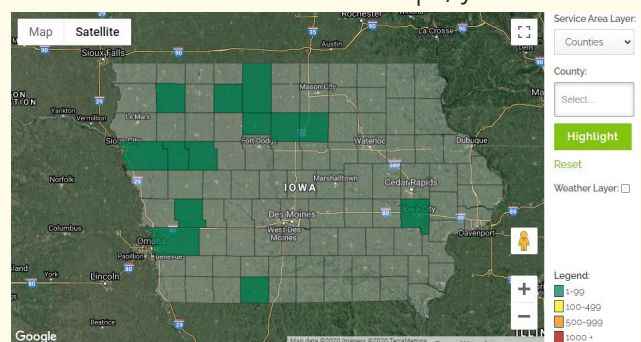


IOWA ELECTRIC COOPERATIVES WEB-BASED POWER OUTAGE INFORMATION RESOURCE

Information about power outages effecting homes, businesses and farms served by North West REC is available online at www.iowarec.org, the website of the Iowa Association of Electric Cooperatives.

This web resource, developed by the Iowa Association of Electric Cooperatives, provides a statewide view of power outages at electric cooperatives that deliver electricity in each of the state's 99 counties to approximately 650,000 Iowans. When you log onto the power outage tool, you will see a map of Iowa, and you can view the information from a county-by-county view of Iowa or electric co-op-by-electric co-op view, including North West REC. At the website, you also will be able to obtain safety information as well as link to North West REC. In addition to going to the statewide association's website to view the maps, you can check out the information at <http://outages.iowarec.org>.

When there are widespread power outages in Iowa or isolated power outages impacting large numbers of Iowans, North West REC will enter information onto the website. The map will automatically refresh every 15 minutes, so it will reflect the most recently entered information from the electric co-ops. When only a few North West REC member-consumers are without power, the website may not necessarily reflect that information.



YOUTH TOUR CONTEST *2022*



**Want to visit Washington, D.C.? Who wouldn't?
It's FUN, it's FREE, and you'll make lots of FRIENDS!**

Iowa's locally owned electric cooperatives have been sending high school students to Washington D.C. every June since 1958! On the week long tour, students learn about electric cooperatives, American history and U.S. government and walk away with a greater understanding of their role as an American citizen. They participate in National Youth Day, visit with their elected legislators, and explore the sights around the nation's capital.

Approximately 40 high school students are chosen by local electric cooperatives from across the state of Iowa every year. The Iowa students join with more than 1,800 students from co-ops around the country for the national Youth Tour in Washington D.C. in June.

North West REC is sponsoring the 2022 Youth Tour Contest for three students receiving an ALL-EXPENSE PAID trip to Washington, D.C. The trip is scheduled for July 18-24, 2022, (with orientation the evening of June 18 in Des Moines.)

All sons and daughters of North West REC member consumers, who are presently juniors or seniors in high school, are eligible to participate. The Board of Directors and management encourage all who are eligible to enter the Youth Tour Contest for an exciting educational experience.

You can find the application online by visiting our website at www.nwrec.coop or you can e-mail Renee at rwynia@nwrec.coop and she will send you an application. If you have any questions, please call 712-707-4935 or 1-800-766-2099. All entries for the scholarship must be returned to the REC no later than Friday, March 18!

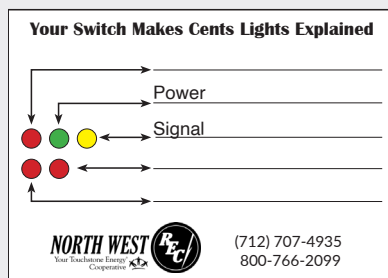


ARE YOU **SWITCH SMART?**

How does my switch work?

The load management switch is controlled by

either a radio or cellular signal or carried through your co-op's distribution power lines. On days when the demand for electricity is nearing peak levels, a signal is transmitted to the load control switch to interrupt the connected equipment. In most cases, HVAC fans will continue to run in the home and water heaters that are properly sized for your use will hold a reserve of hot water – you should notice little difference in your comfort. The combined effect of all the switches on our system allows for a reduction in peak demand. Take a look at your load control switch. The light setup should look like sticker similar to the one on the right. The green light should always be on indicating power to the switch. If a red light is on, the connected equipment is being interrupted.



Sign up for
smart choices 

Each month North West REC hides a code in our Smart Choices news stories. Find the code below in the Smart Choices article, complete the prize entry registration form and submit for a chance to win! We are giving away a two \$25 bill credits in February.

RQP22474FEB

Don't receive Smart Choices?
Subscribe by scanning the QR code with your mobile device or visit our website:
www.nwrec.coop/smart-choices-sign-up





Lyle D. Korver

MANAGER'S *Report*

"The avoided purchased power savings will be socialized across the entire NIPCO membership and, ultimately, benefit member-consumers at the end of the line."

Battery Storage: A Cooperative Innovation

Implementing battery storage to curb electric demand and save members money is an innovative concept that has been studied by the energy industry for years. Incorporating a pilot project in western Iowa is a concept that has been brought to fruition, thanks to the Cooperative Principle of "Cooperation among Cooperatives" and the efforts of seven member electric cooperatives of Northwest Iowa Power Cooperative (NIPCO).

Basin Electric Power Cooperative, which provides power to electric

co-ops across the Midwest, introduced a member-owned Trial Battery Rate into its policy in 2019. The rate allocates up to 150kW per Class C member to employ between a substation and the end user.

Northwest Iowa Power Cooperative (NIPCO), a Basin member, provides wholesale electric generation and transmission services to North West REC, along with six other member cooperatives in western Iowa.

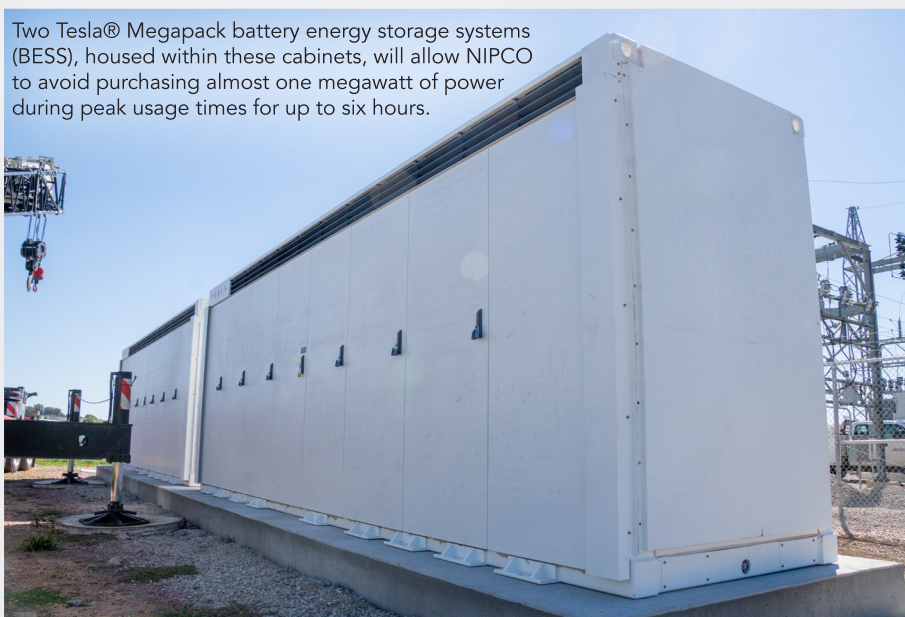
NIPCO, working with its membership, developed a plan which allows each member to pool

its individual allocation, allowing NIPCO to integrate a 975-kilowatt Tesla® Megapack® battery energy storage system (BESS) into the feeder of a single distribution substation within the NIPCO system. The plan enables NIPCO to utilize battery storage as a part of its overall load management strategy.

"The goal of installing a grid-scale battery will be for peak-shaving, thus reducing the peak power demand charge that NIPCO pays to purchase power during periods of high consumption. These demand charges are passed along to our member co-ops," explains Chris Larson, NIPCO's system protection engineer II. "The battery will be charged during off-peak hours and then discharged during peak hours, alongside NIPCO's existing load management system. Operating the battery storage system in this manner reduces the peak power demand charges that ultimately get passed along to member-consumers."

The stored power from the battery will allow NIPCO to avoid purchasing almost 1 megawatt of power (enough to power approximately 100 homes) during peak usage times for up to six

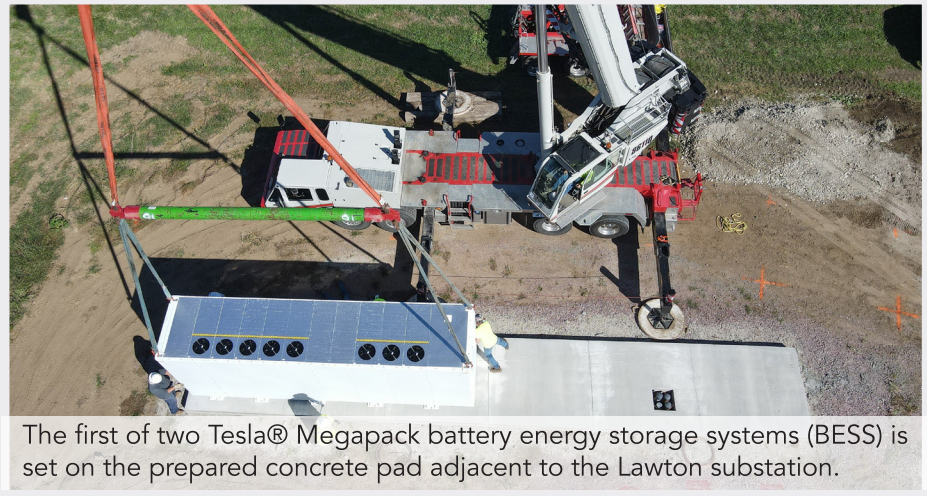
Two Tesla® Megapack battery energy storage systems (BESS), housed within these cabinets, will allow NIPCO to avoid purchasing almost one megawatt of power during peak usage times for up to six hours.



hours. The operation of the battery will be coordinated with existing load control strategies.

The Tesla Megapack units will be connected to the Lawton Substation located west of Lawton, Iowa. While this distribution substation serves Woodbury County Rural Electric Cooperative members, the avoided purchased power savings will be socialized across the entire NIPCO membership and, ultimately, benefit member-consumers at the end of the line.

Site prep took place at the Lawton Substation during the summer and fall which expanded the substation footprint to include a separate fenced yard that houses



The first of two Tesla® Megapack battery energy storage systems (BESS) is set on the prepared concrete pad adjacent to the Lawton substation.

the batteries. The Tesla Megapacks were placed in September, allowing NIPCO and Woodbury County Rural Electric Cooperative crews to

connect it with the substation. The battery deployed its first charge on December 29, 2021.

Preliminary Annual Meeting Plans

As you might recall, last year we livestreamed our Annual Meeting and had just one meeting – not in all four districts as we had in the past. We will be continuing with that format this year and in the years to come. We are putting a lot of focus on our Fall Member Appreciation events, and we will continue to have those events in August and September in all four districts. The fall events will include a nice meal, activities for the whole family, and distribution

of patronage checks. We have found that the fall outdoor events are much better attended than our March meetings and we get more of our younger and newer members to attend.

The Annual Meeting this year will be held at the Skate Palace in Ida Grove. **The date is Thursday evening, March 31, 2022, at 6:30 p.m.** We will be serving pie and ice-cream and will have our annual business meeting. During the business meeting, we will once

again be having a panel discussion where we will answer many of the questions that have been submitted by our members. This meeting will be live streamed on Facebook Live so all members will have the opportunity to listen in if they aren't able to attend in person.

The plan is to rotate the Annual Meeting between our four districts with a different location each year.

We will provide more information to our members when we mail out our Annual Report and director election ballots in early March. In the meantime, we wanted to make our members aware of our tentative plans for this year's Annual Meeting.



The Q&A panel at the 2021 Annual Meeting with NWREC CEO & General Manager Lyle Korver, Director Tom Wagner, Director Jeff Rehder, and NIPCO Executive Vice President & General Manager Matt Washburn.

SAVE! the DATE!

OPERATION ROUND UP *Report*



Disbursements made from North West REC's Operation Round Up Trust in the fourth quarter of 2021 totaled \$22,900. This brings the total disbursements made from Operation Round Up since its inception in June of 1999 to \$595,195. Many people and organizations have been helped thanks to our members.

- \$5,100 Medical Emergencies – assist families with unusual expenses resulting from serious health problems and accident related injuries
- \$9,900 33 Local Fire Departments - program support
- \$2,650 All Kids Can, ATLAS (Orange City and Sioux Center), Autumn's Center, Food Bank of Siouxland, and Siouxland Youth for Christ - Program Support
- \$750 Ida Grove Community Foundation - community support for events/projects

Operation Round Up funds are generated through a voluntary rounding up of cooperative members' electric bills to the next nearest dollar, and dollars are used to assist worthy causes and organizations right in your local area.

If you are currently not participating in Operation Round Up and would like to become a part of this worthwhile program, please call our office for information or fill out the form available on our website. To receive an application for assistance, please call the office at 707-4935 or 800-766-2099.



NORTH WEST REC OFFERS *Powerline Scholarship*

North West REC is again sponsoring a powerline scholarship. This program is designed to assist persons enrolled in a course of powerline training at Northwest Iowa Community College in Sheldon.

A \$1000 scholarship will be awarded to an individual who has met the eligibility requirements. To be considered for the scholarship, applicants must meet the following criteria:

- Reside in the four county area served by North West REC (Ida, Plymouth, O'Brien and Sioux Counties)
- Be a member or the child/dependant of a member of North West REC
- Be accepted as a full time student in the powerline program at Northwest Iowa Community College in Sheldon
- **Submit a scholarship application to North West REC by Friday, February 25, 2022**

All applicants are required to submit an application form as well as their most recent academic transcript. The criteria for the award will be based upon community and school activities, potential for success and grade point average.

You can apply online by visiting our website at www.nwrec.coop or you can e-mail Renee at rwynia@nwrec.coop and she will send you an application. If you have any questions, please call 712-707-4935.

All entries for the scholarship must be returned to the REC no later than Friday, February 25!



North West REC \ Basin Electric Power Cooperative 2022 Scholarship Application



Scholarship applicants must be a U.S. citizen, a dependent of a current North West REC member, a **senior** in high school in our service area for the 2021-2022 school year, and planning to enroll in an accredited two-year or four-year college, university or vocational/technical school. Please complete the form below; completeness and neatness ensure your application will be evaluated appropriately.

Name: _____ Phone: _____

Address: _____ City: _____ State: _____ Zip: _____

Email Address: _____

Father's Name: _____ Mother's Name: _____

Parents must be active members of North West REC or have a current electric account with North West REC. In order to verify, please provide account number from a North West REC electric bill (you may need to get this from your parents 😊): _____

Please put the name and address of the high school which you will graduate this spring.

High School: _____

Address: _____

Please put the name and address of the accredited school you plan to attend in the fall.

School\College: _____ College Town\City: _____

Major course of study: _____

Signatures

Student Signature: _____ Date: _____

Parent Signature: _____ Date: _____

Scholarship Submittal Requirements:

1. Complete this form by typing or printing - your name should be on all attachments.
2. Recent academic transcript from high school.
3. Copy of your college entrance examination (ACT and/or SAT) scores.
4. Compose a short essay outlining your high school honors, school activities, community involvement, and employment history and how these experiences have shaped your character and future career goals.
5. One letter of reference from a teacher, counselor or employer.
6. Mail your complete application packet to:

North West REC
Attn: Scholarship Committee
P.O. Box 435
Orange City, IA 51041

Scholarship applicants, who are not awarded a \$1,000 scholarship award, will be asked to watch an educational video on North West REC and the cooperative model and then complete a questionnaire. This will then enter applicants into a random drawing for a \$500 or \$250 scholarship. Details of this video and questionnaire will be communicated at a later date.

DEADLINE: Friday, February 25, 2022

THE POWER QUIZ

NORTH WEST REC

1. When is the scholarship deadline?
2. Name one of the 4 tips for winter safety listed in the newsletter:
3. What program at NCC do we specifically offer a scholarship for?

Name _____ Acct. # _____

Find the answers within the content of this newsletter, our website or Facebook posts and you could win a prize of \$10 off your electric bill. Send your answers to powerquiz@nwrec.coop or you can send your written answers to North West REC, PO Box 435, Orange City, IA 51041. You may mail your entry along with your electric bill payment, but remember the deadline is March 10. Each month, ten names will be randomly drawn from all correct entries for a \$10 bill credit. Members who answer the questions correctly and participate at least three times throughout the year will be eligible for 2 - \$250 bill credits, through a random drawing, at the end of the year.

POWER QUIZ *Winners*

- Cody Thoreson - Ida Grove
- Dan Noteboom - Archer
- Steve Bunkers - Remsen
- Gilbert Rus - Rock Valley
- John Evans - Remsen
- Glenda van Meeteren - Hull
- Allen Mulder - Rock Valley
- Randy Van Kalsbeek - Hospers
- Paul Dekker - Maurice
- Allan Bolkema - Sioux Center

NOVEMBER & DECEMBER 2021

- Wes Forman - Rock Valley
- John Ymker - Sioux Center
- Rodney Renken - Le Mars
- Terry Kratz - Westfield
- Joel Ludwigs - Le Mars
- Emily Taylor (K&E Enterprises Inc) - Hawarden
- Kyle Puhrman - Paullina
- Paul Palsma - Alton
- Arlin Bleyenbergh - Sioux Center
- Teunis Hoefakker - Rock Valley

\$250 winners for 2021: Dennis Oldenkamp, Sheldon & Greg Mills, Hartley



ARE YOU SWITCH SMART?

What kind of signal to your switch helps control it?

Answer: _____

Name _____ Acct. # _____

What do you know about the Switch Makes Cents program? Find the answers within the content of this newsletter, our website or Facebook posts and you could win a prize. Send your answers to switchsmart@nwrec.coop, fill out the question form online, or send your written answers to North West REC, PO Box 435, Orange City, IA 51041. You may mail your entry along with your electric bill payment, but remember the deadline is March 31. At the end of the quarter one name will be randomly drawn from all the correct entries for a prize. With a new question every month, you can participate up to 3 times in each quarter!

North West Rural Electric Cooperative

P.O. Box 435
1505 Albany Place SE
Orange City, IA 51041-0435

OFFICE HOURS:
Monday through Friday
7:30 a.m. till 4:00 p.m.

Orange City office open during noon hour

Le Mars office closed 12:00 - 12:30 p.m.

Ida Grove office open 9:00 a.m. - 2:00 p.m.
Wednesdays only

PHONE:

ORANGE CITY
(712) 707-4935
(800) 766-2099

IDA GROVE
(712) 364-3341

LE MARS
(712) 546-4149

Outside Depository
Box Available For
After Hours Payments

This institution is an equal opportunity employer, provider, and lender.

Lyle D. Korver
CEO & General Manager

Curt Ahrenholz
Finance & Office
Services Director

Emily Vander Velde
Editor



Like us on Facebook & Follow us on Instagram!